

School Portrait Day by Cheekwood is coming to:

Central Middle School

Picture Days Tues. Aug. 4th & Wed. Aug. 5th

2015

5 DIFFERENT BACKGROUND COLOR CHOICES



GREY



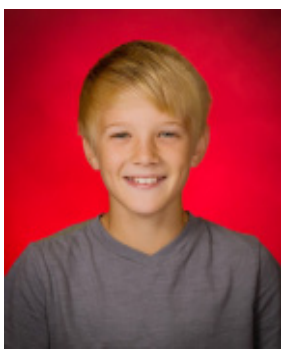
PURPLE



BLUE



GREEN



RED

We offer 16 different package choices. Choose your packages & pick your background colors.

Package A

\$17 Trad'l. Grey -or-
\$21 Color Background
1-5x7 & 8 exch wallets
Facial Retouching Included

Package B

\$29 Trad'l Grey or \$33 Color
4-5x7's
& 32 exchange wallets
Facial Retouching Included

Package C

\$24 Trad'l Grey or \$28 Color
1-8x10, 2-3x5's, 4-2x3's
16 exchange wallets
Facial Retouching Included

Package D

\$19 Trad Grey or \$23 Color Bkgd.
1-5x7, 1-3x5, 4-2x3's
12 exchange wallets
Facial Retouching Included

Package E

\$37 Trad Grey or \$40 Color
1-8x10's,
2-5x7's and
36 Large Wallets
Facial Retouching Included

Package H

\$59 ANY Background Color

3-8x10's, 4-5x7's,
and 48 Large Wallets,
and
1- Portrait CD with your child's image
to use for home printing, facebook,
twitter, computer & phone screen saver, etc.

Package U \$29

1- Portrait CD
of your student's photo
for home printing

Package F \$24

15" Round Photo
Wall Cling
Sticks to any smooth indoor surface
Can be moved and re-stuck several times

Package G

\$23 Trad Grey or \$27 Color
3-5x7's, 4-3x5's, 4-2x3's
16 exch. wallets,
Facial Retouching Included

Package I \$49

1-8x10, 3-5x7's & 24 Large Wallets
- PLUS- 1-Photo CD of
same pose for home printing, facebook,
screen savers, etc. Retouch Included

Package J

\$16 Trad Grey or \$20 Color Bkgd
1-3x5 & 2-2x3's & 8 exchange wallets
Facial Retouching Included

Package K

\$27 Trad Grey or \$31 Color Bkgd
1-8x10, 2-5x7, 4-3x5's, 8-2x3's & 32 exchange wal.

Package L

\$9.66 Grey or
\$13.98 Color Bkgd
Same as Pkg G
NO Retouching

Package M

\$7.50 Grey or
\$10.75 Color Bkgd
Same as Pkg C
NO Retouching

Package N

\$12.69 Grey or
\$17.00n Color Bkgd
Same as Pkg K
NO Retouching

Package O

\$6.42 Grey or
\$9.72 Color Bkgd
Same as Pkg D
NO Retouching

Add any of these extra photos to any package:
1-16x20 for \$49; 1-11x14 for \$29; 1-8x10 for \$14;
2-5x7's for \$14; 8-2x3 Large Wallets for \$14;

Package Q \$15

1 - 2 3/4 x 4
BAG TAG
Your Photo
Printed on
BOTH SIDES

Package R \$13

1 - 2 1/4 X 2 1/4
KEY CHAIN
Your Photo
Printed on
BOTH SIDES

Package S \$20

1 - 8 x 9
MOUSE PAD
with your photo

Package T \$14

1 - 4 x 5
PHOTO MAGNET
with your photo

Package P:

\$4.80 Grey or
\$9.12 Color Bkgd
Same as Pkg J
NO Retouching

CREDIT CARD ORDER INFO

VISA__ MASTER CARD__ Student Name____

Name on Card_____

CARD # _____

EXP DATE_____ Amount purchased\$_____

If you pay by credit card, fill out the information in the box, detach and fold the form, and place in the sealed envelope for card information privacy.

If you pay by check, please note:
Payment by check is your express authorization that any returned check may be presented to your account electronically or as an IRD along with a separate EFT on demand draft for the maximum returned/dishonored check fee as allowed by state law.

---Tear off at perforated line, fill out info completely, place payment inside, and bring to school on Tues. Aug. 4th -or- Wed. Aug. 5th

Central Middle School Portrait Order Envelope

Student's Name_____ Grade_____

Address_____ Phone_____

I want to order Pack. _____ with background color of _____ for \$_____

I want to order Pack. _____ with background color of _____ for \$_____

I want to order Pack. _____ with background color of _____ for \$_____

I want facial blemish retouching for only \$12 yes or no for \$_____

I want additional photos of _____ for \$_____

I want additional photos of _____ for \$_____

Total amount enclosed is \$_____

Bring to school on Tues. Aug. 4th -or- Wed. Aug. 5th

Make CHECKS payable to:
CHEEKWOOD

Got any questions? Call Cheekwood at 335-0815.